

## Chapter 6: Import New Data Over Existing Data

The import process can be done again and again on the same SADA file regardless of the data type (e.g. sampled, gridded, elevation etc). For gridded models, elevation and so forth there is no difference whether the file contains previous data or not. However, for sampled data with its richer array of information types, some additional things need to be considered. If your file already contains some sampled point values and you wish to import more sample data values you will see a slightly different import process.

Let's begin by opening SADA (if it is not already open). Then open the file TwoDimensional.sda from the SADA installation directory. To begin, Save the File as TwoDimensionalWithMore.sda so we don't affect the original file. This file already has the two dimensional soil data set imported from twodimensional.csv. We will now import a new set of three dimensional groundwater data into the file. In this new data set there is only one data set of Chlordane measurements.

Select from the main menu Data→Import Sampled Data and choose from the file ThreeDimensional.csv from the SADA installation directory (likely C:\Program Files\SADA 5.0).

SADA will first scan your file and identify the major column headers. The file looks like this in Excel.

	A	B	C	D	E	F	G	H	I	J	K	L	M	N	
1	X	Y	Z	CAS	Names	Values	Detect	Media	Date	WELLID_1	WellID	SAMP_DATE	SURELE	SAMPELE	
2	27273.89	23261.16	2.8	1234123	Chlordane	0.00015		1	GW	3/22/1994	DP-102-1	DP-102	4/8/1997	89.8	32
3	27273.89	23261.16	5.2	1234123	Chlordane	0.00027		1	GW	3/22/1994	DP-102-1	DP-102	4/8/1997	89.8	27
4	27273.89	23261.16	7.8	1234123	Chlordane	0.00046		1	GW	3/22/1994	DP-102-1	DP-102	4/8/1997	89.8	22
5	27273.89	23261.16	10.4	1234123	Chlordane	0.00045		1	GW	3/22/1994	DP-102-1	DP-102	4/8/1997	89.8	17
6	27273.89	23261.16	13	1234123	Chlordane	0.00028		1	GW	3/22/1994	DP-102-1	DP-102	4/8/1997	89.8	12
7	27273.89	23261.16	15.6	1234123	Chlordane	0.00012		1	GW	3/22/1994	DP-102-1	DP-102	4/8/1997	89.8	7
8	27273.89	23261.16	18.2	1234123	Chlordane	0.00004		1	GW	3/22/1994	DP-102-1	DP-102	4/8/1997	89.8	2
9	27273.89	23261.16	20.8	1234123	Chlordane	0		1	GW	3/22/1994	DP-102-1	DP-102	4/8/1997	89.8	-3
10	27273.89	23261.16	23.4	1234123	Chlordane	0		1	GW	3/22/1994	DP-102-1	DP-102	4/8/1997	89.8	-8
11	27273.89	23261.16	26	1234123	Chlordane	0		1	GW	3/22/1994	DP-102-2	DP-102	4/8/1997	89.8	-13
12	27512.91	23260.99	2.8	1234123	Chlordane	0.46147		1	GW	3/22/1994	DP-103-1	DP-103	4/8/1997	89.8	32
13	27512.91	23260.99	5.2	1234123	Chlordane	0.69144		1	GW	3/22/1994	DP-103-1	DP-103	4/8/1997	89.8	27
14	27512.91	23260.99	7.8	1234123	Chlordane	0.73024		1	GW	3/22/1994	DP-103-1	DP-103	4/8/1997	89.8	22
15	27512.91	23260.99	10.4	1234123	Chlordane	0.36323		1	GW	3/22/1994	DP-103-1	DP-103	4/8/1997	89.8	17
16	27512.91	23260.99	13	1234123	Chlordane	0.12108		1	GW	3/22/1994	DP-103-1	DP-103	4/8/1997	89.8	12
17	27512.91	23260.99	15.6	1234123	Chlordane	0.02729		1	GW	3/22/1994	DP-103-1	DP-103	4/8/1997	89.8	7
18	27512.91	23260.99	18.2	1234123	Chlordane	0.00492		1	GW	3/22/1994	DP-103-1	DP-103	4/8/1997	89.8	2
19	27512.91	23260.99	20.8	1234123	Chlordane	0.00076		1	GW	3/22/1994	DP-103-1	DP-103	4/8/1997	89.8	-3
20	27512.91	23260.99	23.4	1234123	Chlordane	0.00011		1	GW	3/22/1994	DP-103-1	DP-103	4/8/1997	89.8	-8
21	27512.91	23260.99	26	1234123	Chlordane	0.00001		1	GW	3/22/1994	DP-103-2	DP-103	4/8/1997	89.8	-13
22	27512.91	23260.99	28.8	1234123	Chlordane	0		1	GW	3/22/1994	DP-103-2	DP-103	4/8/1997	89.8	-18
23	27512.91	23260.99	31.2	1234123	Chlordane	0		1	GW	3/22/1994	DP-103-2	DP-103	4/8/1997	89.8	-23
24	27782.53	23262.52	2.808	1234123	Chlordane	0.13306		1	GW	3/22/1994	DP-104-1	DP-104	4/8/1997	90.2	32
25	27782.53	23262.52	5.408	1234123	Chlordane	0.20684		1	GW	3/22/1994	DP-104-1	DP-104	4/8/1997	90.2	27
26	27782.53	23262.52	8.008	1234123	Chlordane	0.23958		1	GW	3/22/1994	DP-104-1	DP-104	4/8/1997	90.2	22
27	27782.53	23262.52	10.808	1234123	Chlordane	0.14084		1	GW	3/22/1994	DP-104-1	DP-104	4/8/1997	90.2	17
28	27782.53	23262.52	13.208	1234123	Chlordane	0.04967		1	GW	3/22/1994	DP-104-1	DP-104	4/8/1997	90.2	12
29	27782.53	23262.52	15.808	1234123	Chlordane	0.01133		1	GW	3/22/1994	DP-104-1	DP-104	4/8/1997	90.2	7

But the column names in the current SADA file look like this (you can get this result by pressing the information button on the main toolbar).

Easting	Northing	Depth	Casnumber	Name	Value	Detected	Media
27596.25	21900	0	14265851	Ac-225	2	1	SO
28310.25	21900	0	14265851	Ac-225	1.6	1	SO
28935	21900	0	14265851	Ac-225	0.9	1	SO
27685.5	22200	0	14265851	Ac-225	2	1	SO
28131.75	22200	0	14265851	Ac-225	4.2	1	SO
29202.75	22500	0	14265851	Ac-225	1.5	1	SO
27150	23160	0	14265851	Ac-225	1.7	1	SO
27685.5	22920	0	14265851	Ac-225	3.6	1	SO
28042.5	23100	0	14265851	Ac-225	4.9	1	SO
28221	23100	0	14265851	Ac-225	4.2	1	SO
28667.25	23220	0	14265851	Ac-225	2.9	1	SO
29113.5	22980	0	14265851	Ac-225	1	1	SO
27417.75	23580	0	14265851	Ac-225	1.9	1	SO
27774.75	23640	0	14265851	Ac-225	2.9	1	SO
28310.25	23400	0	14265851	Ac-225	3.1	1	SO
28935	23460	0	14265851	Ac-225	0.8	1	SO
28200	22560	0	14265851	Ac-225	4.8	1	SO
28700	22500	0	14265851	Ac-225	3.3	1	SO
27200	22380	0	14265851	Ac-225	2.03	1	SO
28984	22787	0	14265851	Ac-225	2.6	1	SO
27350	22750	0	14265851	Ac-225	2.5	1	SO

So we'll need to do some column matching. You will have to match the columns in the new file to their counterpart in the current data set. This is done with the column matching window.

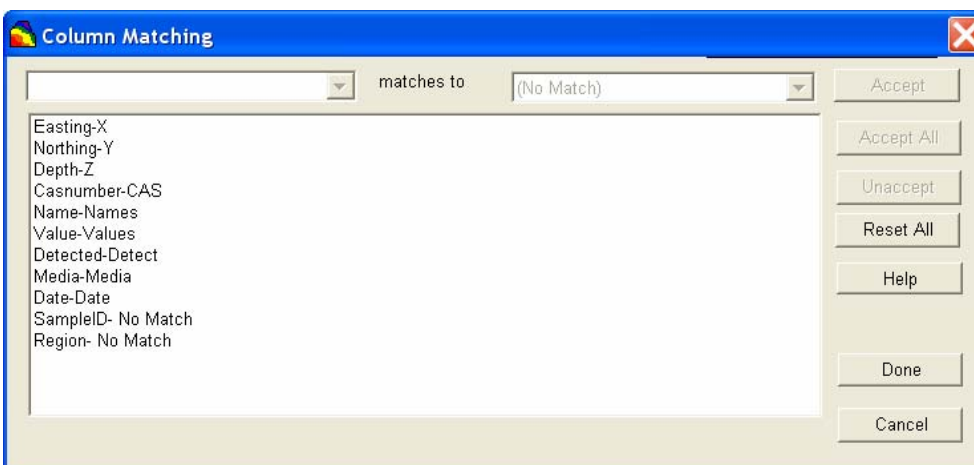
Region matches to (No Match)

- (No Match)
- WELLID
- SAMP\_DATE
- SURELE
- SAMPELE

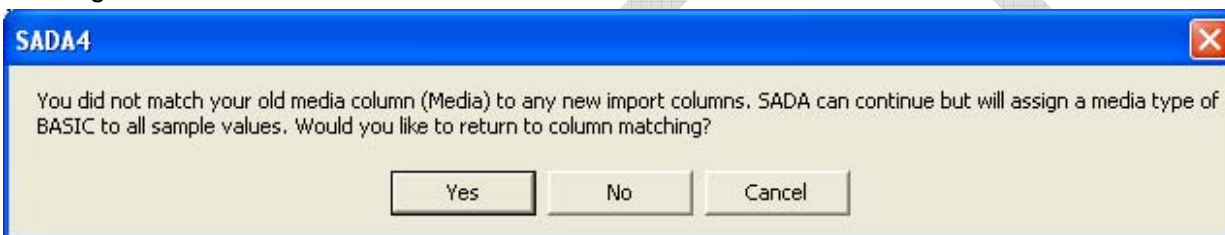
Buttons: Accept, Accept All, Unaccept, Reset All, Help, Done, Cancel

Match the columns in the current dataset to the columns of the new file using the drop down arrows. To accept a match, press Accept, and the match will appear in the window below. To accept all the matches (if you know that the columns are lined up), press Accept All. Select Unaccept to remove one match or Reset All to return all matches back to their respective lists.

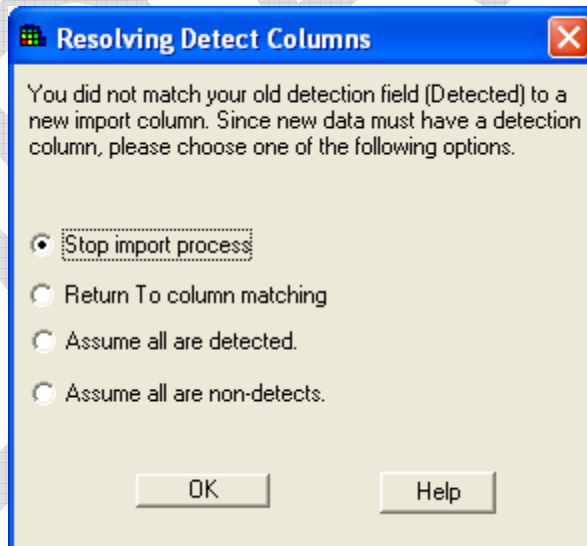
Make sure when you are done, your matches look exactly like the following...



If you did not have a media column in your new data set, SADA would present the following message.



Additionally, detect columns have to be matched or SADA will present the following message.



If you specified a date column in your first data set, you **MUST** specify one in this new dataset. You cannot proceed unless you do.

After the columns have been set, press Done. SADA begins the conversion process and presents the data as it will be imported into the Data Editor.

Just like the first time you imported your sampled data, if there are no errors you will be given a snapshot of the first 1000 records. If there are errors you will be presented with the data

editor. In the data editor, you can change a handful of errors and more information is available in the dataset management chapter. But if you have too many errors you should consider correcting them in the source file first. Remember that any changes to the data inside SADA will not be made to the source file on the outside.

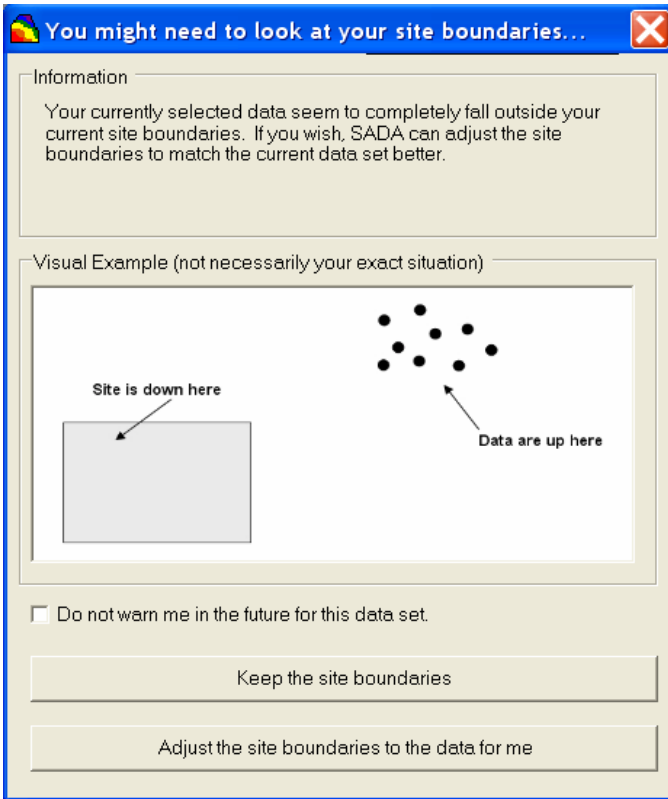
### Thinning the Data

As SADA finishes the import process you may be provided a warning about your site boundaries. This is common and you can find a discussion of this in the chapter on importing elevation data. The same principles apply here and anywhere large data sets are imported into SADA. For this discussion, we'll move forward with our smaller data set.

### Adjusting Site Boundaries

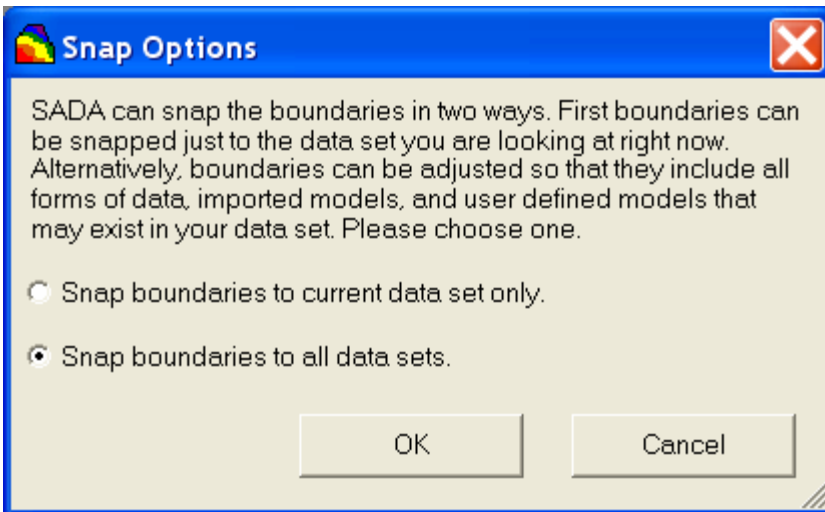
If you import information into your SADA file that has horizontal spatial extents that are beyond the current site boundaries, you will be presented with an opportunity to change the site boundaries to include the current data. This often happens when you've just created a new SADA file and you're using the dummy site (see the chapter on creating a SADA file).

This is an action that you may or may not wish to take. For example, certain elevation sets exceed site boundaries, but you do not want to include the entire elevation set. When SADA sees this situation, you may be presented with the following opportunity:



You may either keep the site boundaries or adjust them. For data sets that you regularly visit but do not wish to be warned about select the "Do not warn me in the future for this data set option". If you regret selecting this you can reverse it by visiting

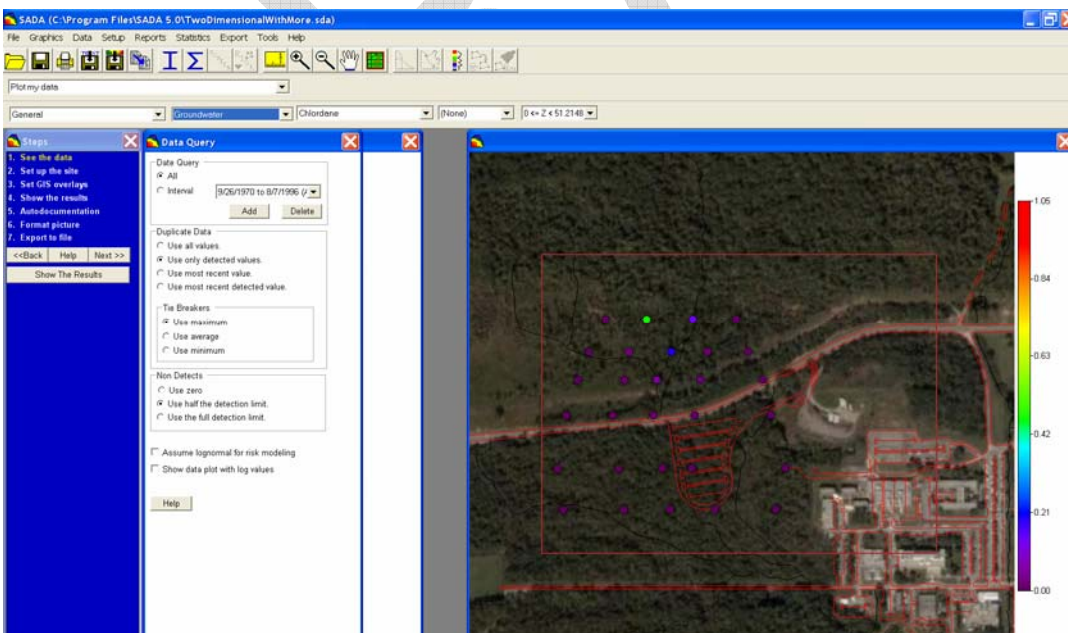
Tools→Warning Options→Site Boundary Problems→Turn Warnings On. If you choose to adjust the site boundaries, you are presented with another option.



Here you can choose to snap the boundaries to the current data set or snap them once and for all to all data sets found in your SADA file. This will automatically update your Site Boundaries information found in your setup the site step. Further information on adjusting site boundaries is available in the chapter on creating a new SADA file.

When you are presented with this option in our current example, agree to the adjustment and agree to Snap boundaries to all data sets. SADA should now look similar to the following image.

After submitting data through the Data Editor, SADA adds the new data set to your file. When SADA returns you will still be looking at the Ac-225 soil data. To see your new data set change the data type box from Soil to Groundwater. You should see the following.



You can save your file now. This new data set is a three dimensional data set. If you have not already done so, please read the chapter on dealing with three dimensional data (chapter ?).

DRAFT